

*New*

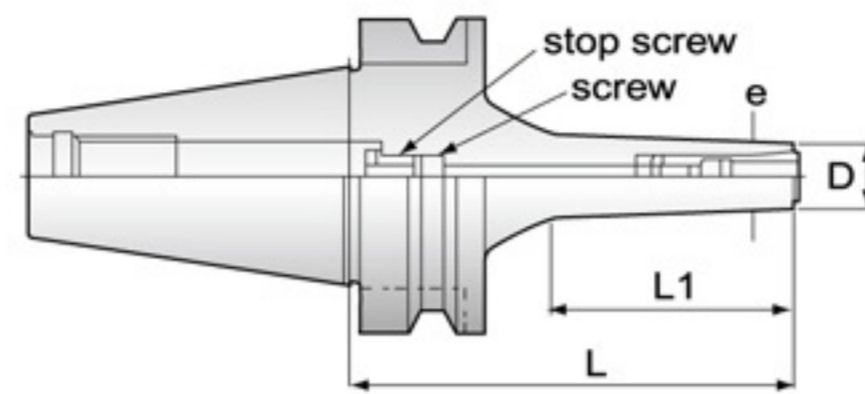


Fig. 1

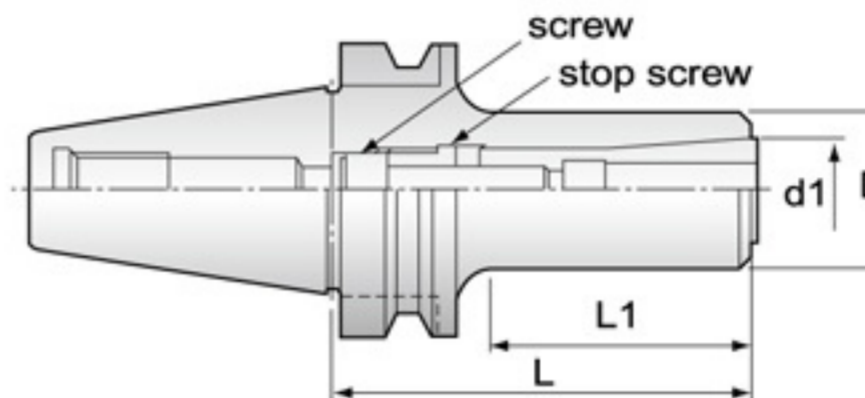
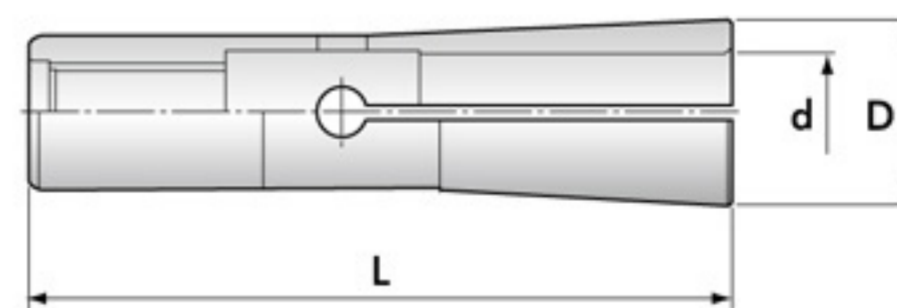


Fig. 2

Type No. 型號	Gripping Range	L	D	Fig	D
BT30-SDC6-60	2-6	60	13	1	DC6
BT30-SDC6-90	2-6	90	13	1	DC6
BT40-SDC6-60	2-6	60	13	1	DC6
BT40-SDC6-90	2-6	90	13	1	DC6
BT40-SDC6-120	2-6	120	13	1	DC6
BT40-SDC6-150	2-6	150	13	1	DC6
BT40-SDC8-90	3-8	90	22	1	DC8
BT40-SDC8-120	3-8	120	22	1	DC8
BT40-SDC10-90	3-10	90	28	2	DC10
BT40-SDC10-120	3-10	120	28	2	DC10
BT40-SDC12-70	3-12	70	34	2	DC12
BT40-SDC12-90	3-12	90	34	2	DC12
BT50-SDC10-110	3-10	110	28	2	DC10

## SDC 高速後拉筒夾 SDC Collet (for end mill)



Order Code		L	ØD
Collet series	Ød		
SDC6	3, 4, 6	36	9.6
SDC8	3, 4, 6, 8	45	15
SDC10	3, 4, 6, 8, 10	52	19.1
SDC12	3, 4, 5, 6, 8, 10, 12	60	22